

# RAHA REMINDERS

## Khalifa City Campus



Ms. Abi  
Principal

As we wrap up this half term, we want to extend our heartfelt thanks to each of you for making it such a fantastic term. Your support and involvement have been invaluable!

We wish everyone a happy and safe holiday. Take this time to relax, catch up with family and friends, and recharge for the term ahead.

In the spirit of the International Baccalaureate, let's remember the importance of balancing our academic pursuits with personal well-being. As we take this break, we encourage our students to reflect on their learning and growth, embracing the opportunity to connect with their passions outside the classroom.

For this week's focus on IB learner skills, we reflect on the importance of being caring. Caring students demonstrate empathy, compassion, and respect for others and the environment. Families can support this at home by engaging in activities such as planting a garden or caring for indoor plants. Nurturing a living thing encourages responsibility, patience, and a greater understanding of how our actions influence the world around us.

As Sheikh Mohammed bin Rashid Al Maktoum wisely said, "The future belongs to those who believe in the beauty of their dreams." Let this holiday be a time to dream, recharge, and set new goals.

Looking forward, we're excited for the next half term, especially as we celebrate National Day and enjoy the beautiful, cooler weather.

We can't wait to welcome everyone back refreshed and ready for more learning adventures!

### Key Dates

#### OCTOBER

- 24 DP Assessments
- 25 Pink Ribbon Day - students wear pink
- 29 International Day Coffee Morning

### ADEK's new 'Rayah' app

Please follow the link [here](#) to find out more information on ADEK's new app.



Results



Upcoming fixtures

Infinite  
GAMPS

Half-term Camp

14th-18th October



Half-term Camp

14th-18th October

# RAHA REMINDERS

## Khalifa City Campus

### Mawlid An Nabawi ECP and Performance: Monday 21st October

Students enrolled in the Mawlid ECP will perform on Monday 21st of September in the Black Box. Students involved have been contacted by the ECP teachers.

Schedule for Monday 21st:

- Rehearsal from 3 to 3:30 pm
- Performance from 3:45 to 4:30 pm

Spaces are limited, please complete the form to secure a seat.



### Pink Day Coffee Morning: 25th October from 8-9 am

Save the date! More information will be released by the Parent Team after the midterm break.



### International Day Coffee Morning: 29th October from 8-9 am

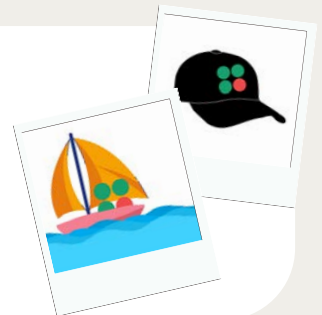
Find out how you can volunteer for one of the most anticipated events of the year. The Parent Team will have an information session about how volunteers can help with the event. It will also be a nice chance to meet other parents from your country.



### Hats on holiday!

If you're traveling over break and are bringing a KCC branded item, take a photo and send it to us! We love to see our community proudly representing KCC!

Send your photo to: [kcccommunications@ris.ae](mailto:kcccommunications@ris.ae).



### Make-a-Wish: During November



Stay tuned for more information as to how the KCC Community can support the foundation, Make-a-Wish, and their mission to fulfill dreams of terminally ill children.

**585,000**  
Over 585,000 wishes granted  
worldwide since 1981

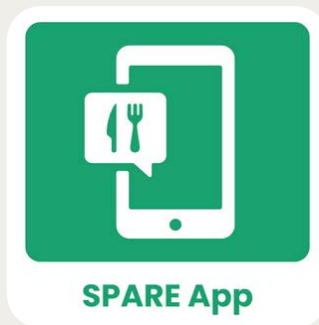
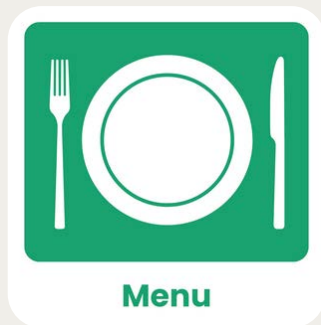
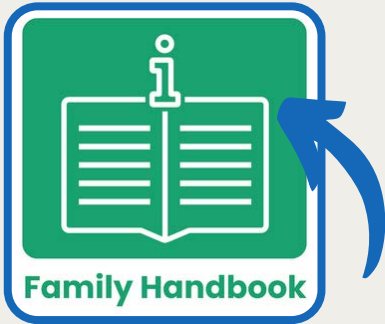
**50 & 6**  
Make-a-Wish operates in 50  
countries on 6 continents.

**34**  
On average, a wish is granted  
somewhere in the world every  
34 minutes.

# RAHA REMINDERS

Khalifa City Campus

## KCC Quick Links



**Follow us!**

**Instagram**

**Youtube**

**Contact us!**

**+971 (0)2 550 5271**

Admissions	<a href="mailto:kccadmissionsadmin@ris.ae">kccadmissionsadmin@ris.ae</a>
Attendance	<a href="mailto:kccabsent@ris.ae">kccabsent@ris.ae</a>
Bus	<a href="mailto:kcctransportation@ris.ae">kcctransportation@ris.ae</a>
ECPs	<a href="mailto:kcccep@ris.ae">kcccep@ris.ae</a>
<b>General</b>	<a href="mailto:kccfrontdesk@ris.ae">kccfrontdesk@ris.ae</a>
Log in issues	<a href="mailto:kccdbadmin@ris.ae">kccdbadmin@ris.ae</a>
PA - Early Years	<a href="mailto:kcceyassistant@ris.ae">kcceyassistant@ris.ae</a>
PA - Primary	<a href="mailto:kccprimaryassistant@ris.ae">kccprimaryassistant@ris.ae</a>
PA - MYP/DP	<a href="mailto:kccmypassistant@ris.ae">kccmypassistant@ris.ae</a>

**Start here**